

**MIL-DTL-5015 Series III**  
**Integrated Rear Banding Platform**  
**Part Number Development**

**Part Number Configuration**

<b>Aero Prefix</b>	<b>AE05-</b>	<b>440-</b>	<b>L</b>	<b>24-</b>	<b>10</b>	<b>P</b>	<b>W</b>
<b>Shell Type</b>							
440 = Wall Mount Receptacle (Ref: MS3450)							
442 = Jam Nut Receptacle (Ref: MS3454)							
443 = Straight Plug (Ref: MS3456)							
<b>Material Finish</b>							
A = Aluminum							
KS = Stainless Shell, Passivated Finish, Firewall							
KT = Ferrous Alloy Shell, Olive Drab Cadmium Finish, Firewall							
L = Aluminum Shell, Electroless Nickel Finish							
LS = Stainless Steel, Passivated Finish							
W = Aluminum Shell, Olive Drab Cadmium Finish							
<b>Shell Size</b>							
8S, 10S, 10SL, 12, 12S, 14, 14S, 16, 16S, 18, 20, 22, 24, 28, 32, 36, 40							
<b>Insert Arrangement</b>							
Per MIL-STD-1651							
<b>Contact Style</b>							
P = Pin							
S = Socket							
<b>Polarization (Keying)</b>							
N = Normal = Blank							
Alternative Polarization = W, X, Y and Z							

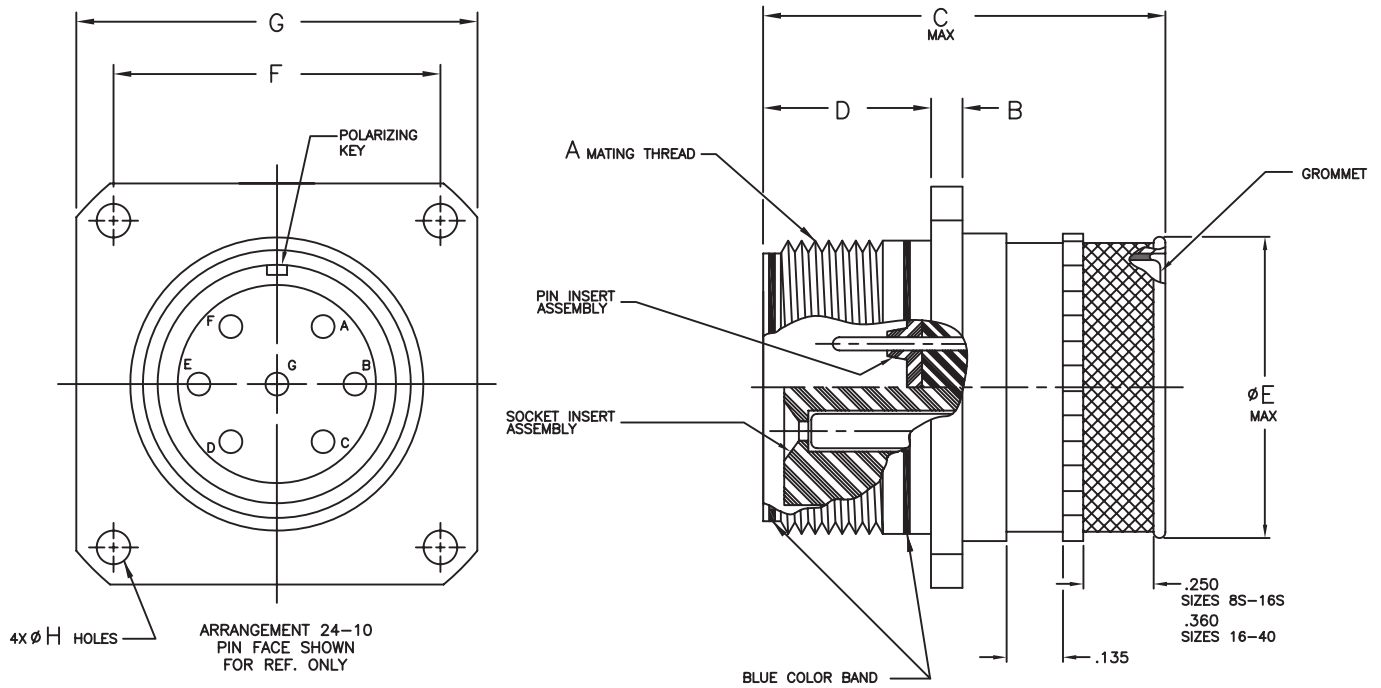
INTEGRATED REAR

**MIL-DTL-5015 Series III**  
**Integrated Rear Banding Platform**  
**Wall Mount Receptacle (MS3450)**



**AE05-440 Receptacle Connector, Wall Mount, with integrated Rear Banding Platform**

INTEGRATED REAR

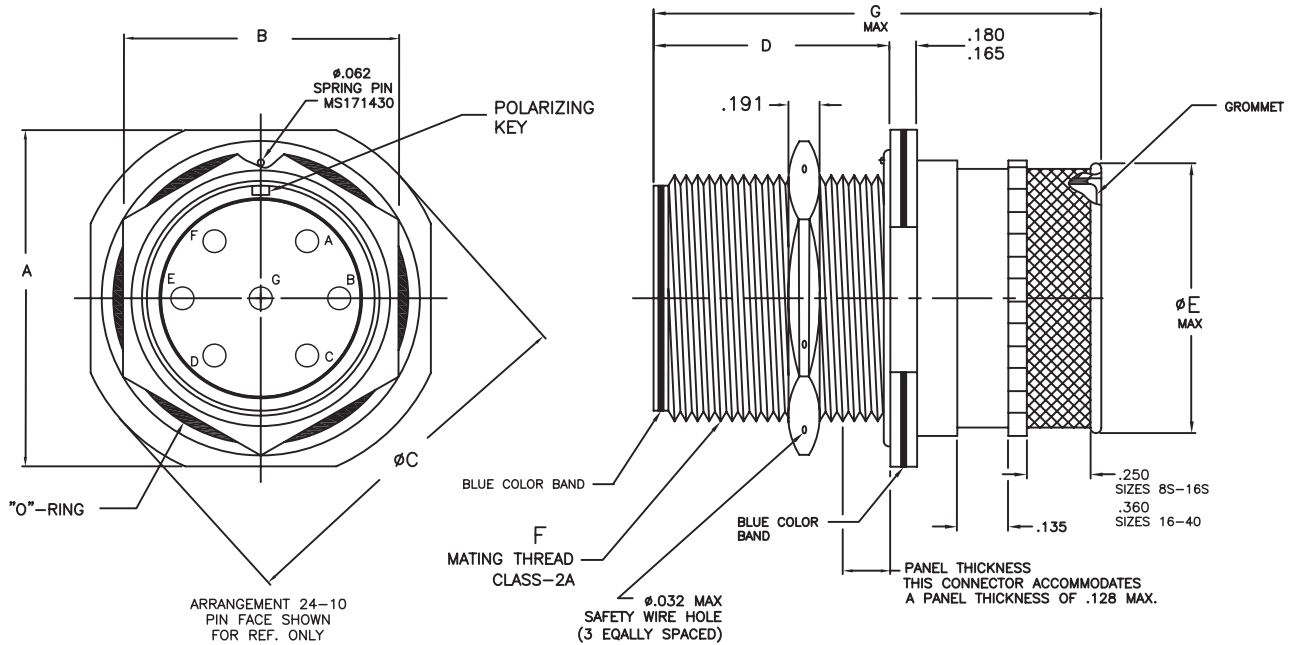


SHELL SIZE	A COUPLING THREAD CLASS 2A	B ±.015	C MAX	D +.031 -.000	Ø E MAX	F (T.P.)	G ±.031	ØH +.010 -.005	
								ALUMINUM	STEEL
8S	.500-28 UNEF	.083	2.031	.562	.505	.594	.875	.120	.150
10S	.625-24 UNEF	.083	2.031	.562	.632	.719	1.000	.120	.150
10SL	.625-24 UNEF	.083	2.031	.562	.632	.719	1.000	.120	.150
12	.750-20 UNEF	.083	2.125	.750	.755	.812	1.094	.120	.150
12S	.750-20 UNEF	.083	2.031	.562	.755	.812	1.094	.120	.150
14	.875-20 UNEF	.083	2.125	.750	.880	.906	1.188	.120	.150
14S	.875-20 UNEF	.083	2.031	.562	.880	.906	1.188	.120	.150
16	1.000-20 UNEF	.083	2.500	.750	1.005	.969	1.281	.120	.150
16S	1.000-20 UNEF	.083	2.031	.562	1.005	.969	1.281	.120	.150
18	1.125-16 UNEF	.125	2.500	.750	1.065	1.062	1.375	.120	.177
20	1.250-18 UNEF	.125	2.500	.750	1.190	1.156	1.500	.120	.177
22	1.375-18 UNEF	.125	2.500	.750	1.315	1.250	1.625	.120	.177
24	1.500-18 UNEF	.125	2.500	.812	1.440	1.375	1.750	.147	.177
28	1.750-18 UNS	.125	2.500	.812	1.750	1.562	2.000	.147	.177
32	2.000-18 UNS	.125	2.500	.875	2.000	1.750	2.250	.173	.209
36	2.250-16 UN	.125	2.500	.875	2.250	1.938	2.500	.173	.209
40	2.500-16 UN	.125	2.500	.875	2.500	2.188	2.750	.173	.209



**MIL-DTL-5015 Series III**  
**Integrated Rear Banding Platform**  
**Jam Nut Receptacle (MS3454)**

**AE05-442 Receptacle Connector, Jam Nut, with integrated rear banding platform**



INTEGRATED REAR

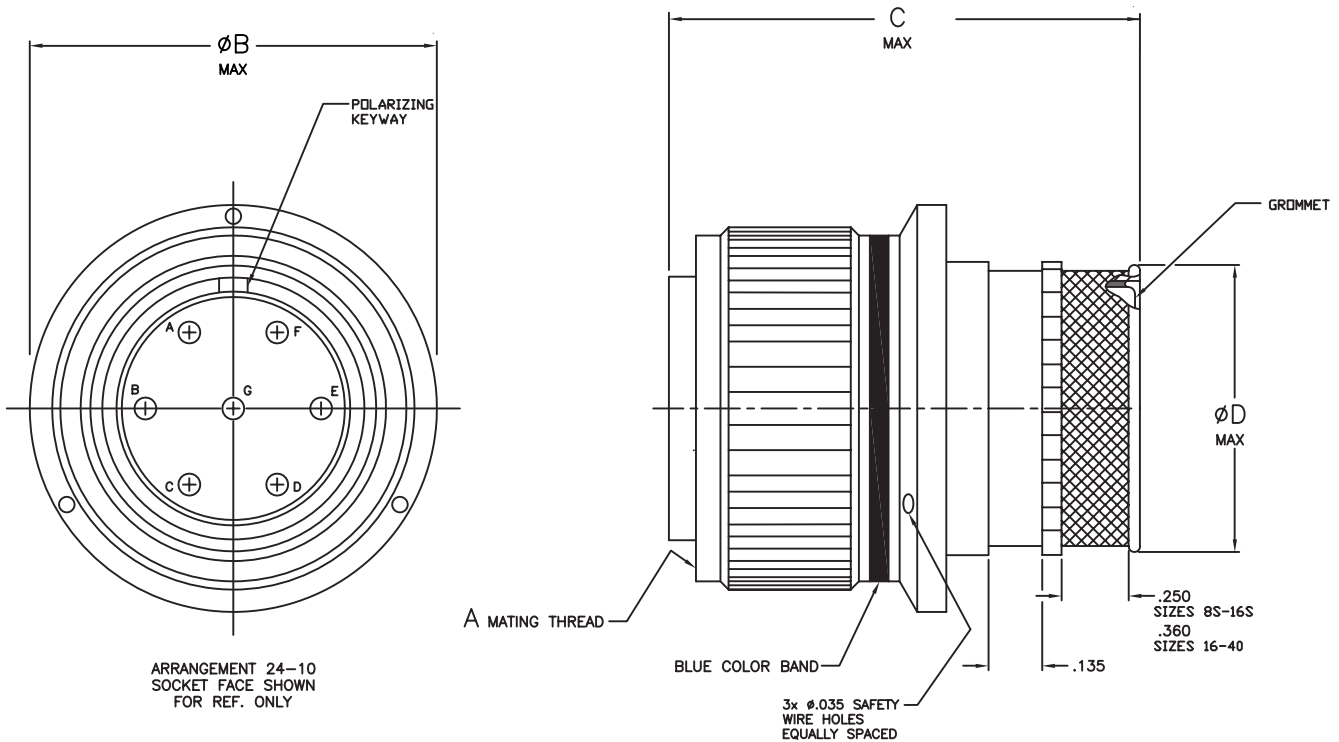
SHELL SIZE	A	B ±.010	Ø C	D	Ø E MAX	F THREAD-2A	G MAX
8S	1.187	.687	1.272	.720	.505	.500-28 UNEF	2.031
10S	1.312	.812	1.397	.720	.632	.625-24 UNEF	2.031
10SL	1.312	.812	1.397	.720	.632	.625-24 UNEF	2.031
12	1.437	.937	1.522	.970	.755	.750-20 UNEF	2.125
12S	1.562	.937	1.522	.720	.755	.750-20 UNEF	2.031
14	1.562	1.125	1.647	.970	.880	.875-20 UNEF	2.125
14S	1.562	1.125	1.647	.720	.880	.875-20 UNEF	2.031
16	1.687	1.250	1.772	.970	1.005	1.000-20 UNEF	2.500
16S	1.687	1.250	1.772	.720	1.005	1.000-20 UNEF	2.031
18	1.812	1.375	1.897	.970	1.065	1.125-18 UNEF	2.500
20	1.937	1.500	2.022	.970	1.190	1.250-18 UNEF	2.500
22	2.156	1.625	2.241	.970	1.315	1.375-18 UNEF	2.500
24	2.281	1.750	2.366	.970	1.440	1.500-18 UNEF	2.500
28	2.531	2.000	2.616	.970	1.750	1.750-18 UNS	2.500
32	2.781	2.375	2.866	.970	2.000	2.000-18 UNS	2.500
36	3.031	2.625	3.116	.970	2.250	2.250-16 UN	2.500
40	3.281	2.875	3.366	.970	2.500	2.500-16 UN	2.500

**MIL-DTL-5015 Series III**  
**Integrated Rear Banding Platform**  
**Straight Plug (MS3456)**



**AE05-443 Straight Plug Connector, with integrated Rear Banding Platform**

INTEGRATED REAR



ARRANGEMENT 24-10  
 SOCKET FACE SHOWN  
 FOR REF. ONLY

SHELL SIZE	A COUPLING THREAD CLASS 2B	ØB MAX	C MAX	ØD MAX
8S	.500-28 UNEF	.844	2.031	.505
10S	.625-24 UNEF	.969	2.031	.632
10SL	.625-24 UNEF	.969	2.031	.632
12	.750-20 UNEF	1.062	2.125	.755
12S	.750-20 UNEF	1.062	2.031	.755
14	.875-20 UNEF	1.156	2.125	.880
14S	.875-20 UNEF	1.156	2.031	.880
16	1.000-20 UNEF	1.250	2.500	1.005
16S	1.000-20 UNEF	1.250	2.031	1.005
18	1.125-18 UNEF	1.344	2.500	1.065
20	1.250-18 UNEF	1.469	2.500	1.190
22	1.375-18 UNEF	1.594	2.500	1.315
24	1.500-18 UNEF	1.719	2.500	1.440
28	1.750-18 UNS	1.969	2.500	1.750
32	2.000-18 UNS	2.219	2.500	2.000
36	2.250-16 UN	2.469	2.500	2.250
40	2.500-16 UN	2.719	2.500	2.500



**MIL-DTL-26482 Series II**  
**Integrated Rear Banding Platform**  
**Part Number Configuration**

**Part Number Configuration**

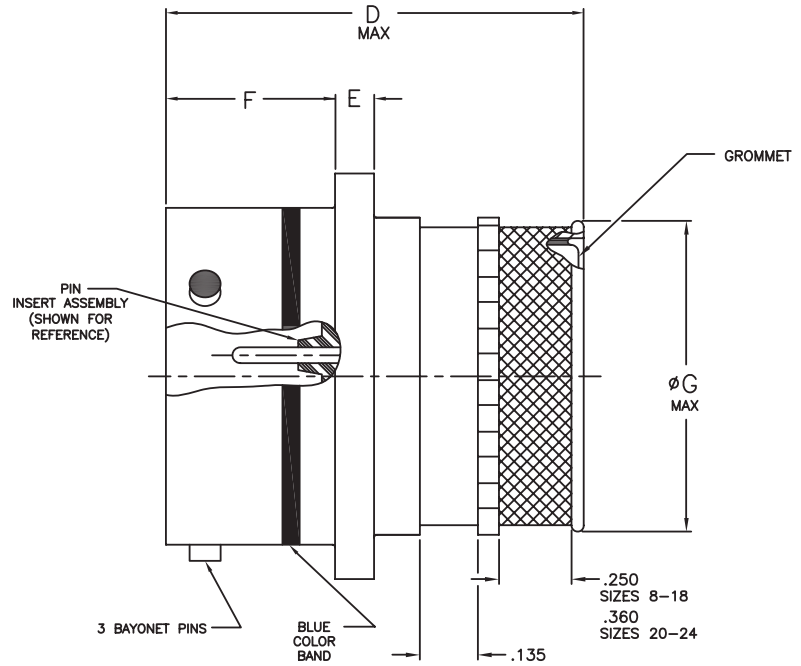
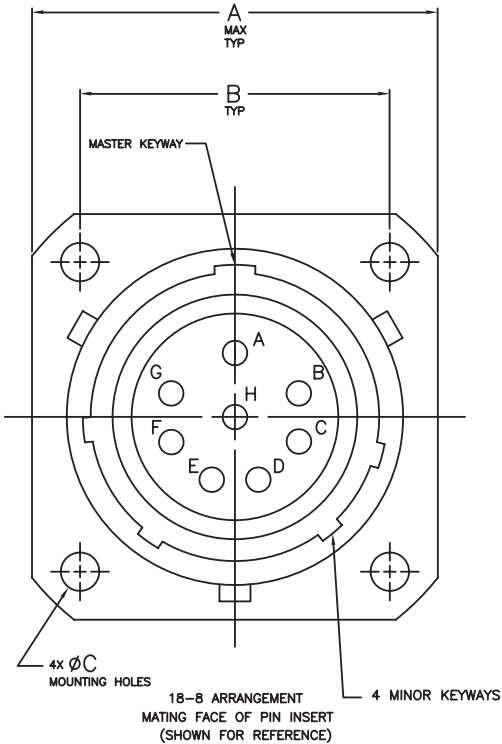
<b>Aero Prefix</b>	<b>AE15-</b>	<b>469-</b>	<b>L</b>	<b>18-</b>	<b>8</b>	<b>P</b>	<b>W</b>
<b>Shell Type</b>							
469 = Rear, narrow flange (Ref: MS3470)							
470 = Rear, cable connecting receptacle (Ref: MS3471)							
471 = Rear, wide flange receptacle (Ref: MS3472)							
472 = Rear, jam nut receptacle (Ref: MS3474)							
473 = Rear, RFI plug (Ref: MS3475)							
474 = Rear, straight plug (Ref: MS3476)							
<b>Material Finish</b>							
L = Aluminum Shell, Electroless Nickel Finish							
W = Aluminum Shell, Olive Drab Cadmium Finish							
<b>Shell Size</b>							
8, 10, 12, 14, 16, 18, 20, 22, 24							
<b>Insert Arrangement</b>							
Per MIL-STD-1669							
<b>Contact Style</b>							
P = Pin							
S = Socket							
<b>Polarization (Keying)</b>							
Normal = Blank							
Alternative Polarization = W, X, Y and Z							

INTEGRATED REAR

**MIL-DTL-26482 Series II**  
**Integrated Rear Banding Platform**  
**Narrow Flange Receptacle (MS3470)**



**AE15-469 Receptacle Connector, Narrow Flange, with integrated Rear Banding Platform**



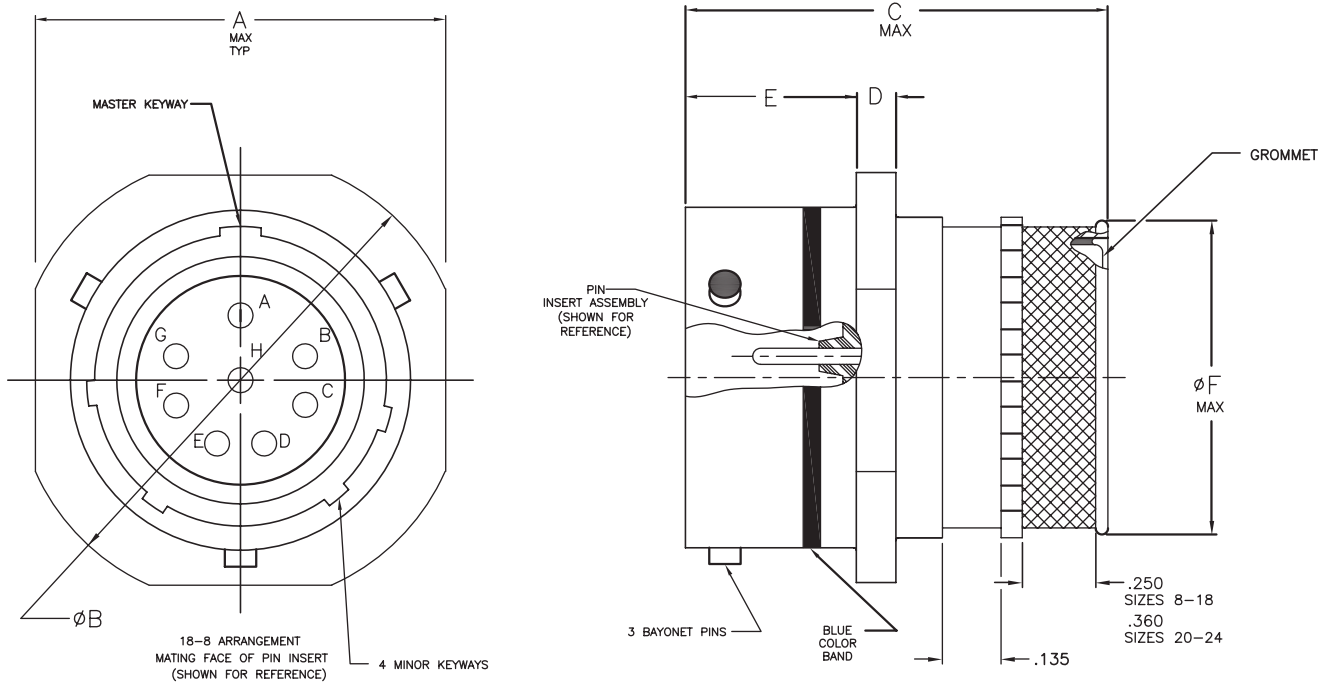
INTEGRATED REAR

SHELL SIZE	A MAX	B	ØC	D MAX	E	F	ØG MAX
8	.828	.599/.589	.120	1.410	.078/.046	.462/.431	.505
10	.964	.724/.714	.120	1.410	.078/.046	.462/.431	.632
12	1.047	.817/.807	.120	1.410	.078/.046	.462/.431	.755
14	1.141	.911/.901	.120	1.410	.078/.046	.462/.431	.880
16	1.234	.974/.964	.120	1.410	.078/.046	.462/.431	1.005
18	1.328	1.067/1.057	.120	1.410	.078/.046	.462/.431	1.065
20	1.453	1.161/1.151	.120	1.475	.110/.078	.587/.556	1.190
22	1.578	1.255/1.245	.120	1.475	.110/.078	.587/.556	1.315
24	1.703	1.380/1.370	.147	1.475	.110/.078	.587/.556	1.440



**MIL-DTL-26482 Series II**  
**Integrated Rear Banding Platform**  
**Cable Connecting Receptacle (MS3471)**

**AE15-470 Receptacle Connector, Cable Connecting, with integrated rear banding platform**



INTEGRATED REAR

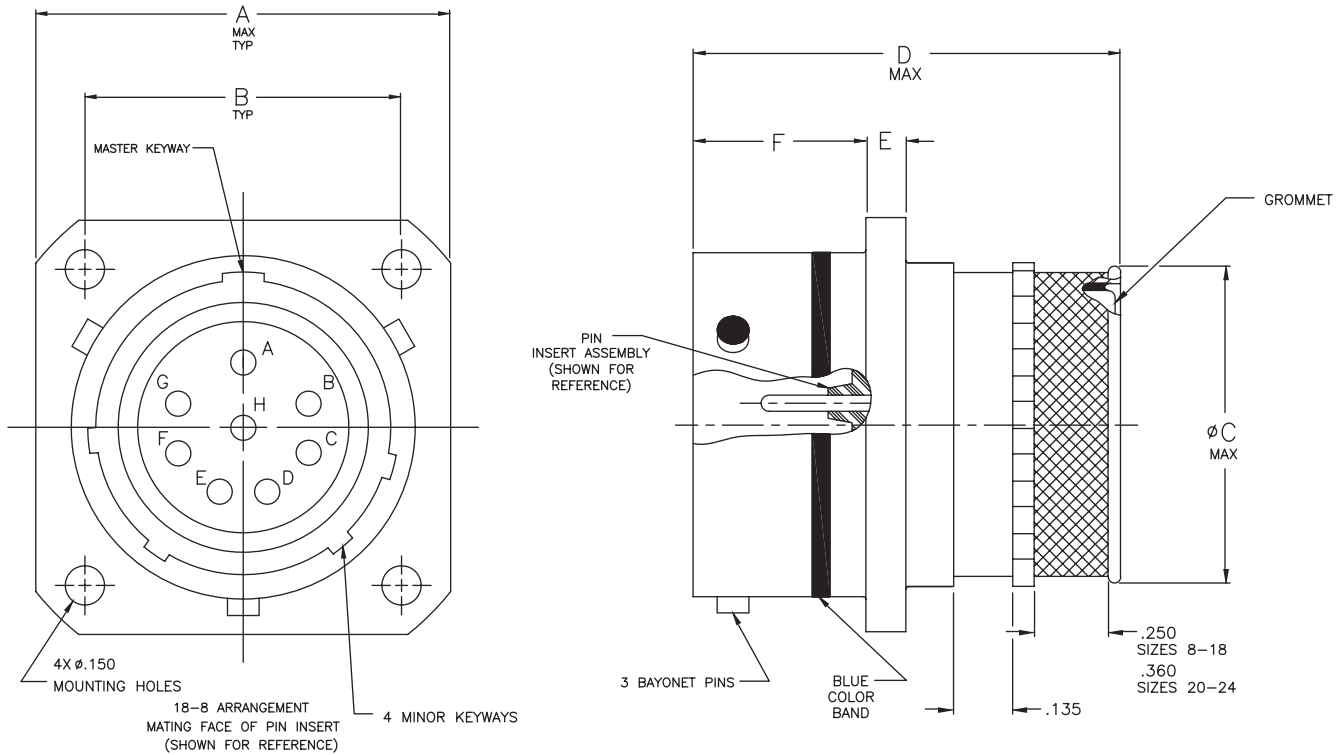
SHELL SIZE	A MAX	ØB	C MAX	D	E	ØF MAX
8	.828	.958/.918	1.410	.078/.046	.462/.431	.505
10	.964	1.082/1.042	1.410	.078/.046	.462/.431	.632
12	1.047	1.176/1.136	1.410	.078/.046	.462/.431	.755
14	1.141	1.270/1.230	1.410	.078/.046	.462/.431	.880
16	1.234	1.364/1.324	1.410	.078/.046	.462/.431	1.005
18	1.328	1.458/1.418	1.410	.078/.046	.462/.431	1.065
20	1.453	1.582/1.542	1.475	.110/.078	.587/.556	1.190
22	1.578	1.708/1.668	1.475	.110/.078	.587/.556	1.315
24	1.703	1.832/1.792	1.475	.110/.078	.620/.589	1.440

**MIL-DTL-26482 Series II**  
**Integrated Rear Banding Platform**  
**Wide Flange Receptacle (MS3472)**



**AE15-471 Receptacle Connector, Wide Flange, with integrated Rear Banding Platform**

INTEGRATED REAR



SHELL SIZE	A MAX	B	$\phi$ C MAX	D MAX	E	F MAX
8	1.065	.734	.505	1.410	.078/.046	.493/.462
10	1.141	.812	.632	1.410	.078/.046	.493/.462
12	1.266	.938	.755	1.410	.078/.046	.493/.462
14	1.360	1.031	.880	1.410	.078/.046	.493/.462
16	1.453	1.125	1.005	1.410	.078/.046	.493/.462
18	1.532	1.203	1.065	1.410	.078/.046	.493/.462
20	1.688	1.297	1.190	1.475	.110/.078	.587/.556
22	1.766	1.375	1.315	1.475	.110/.078	.587/.556
24	1.891	1.500	1.440	1.475	.110/.078	.587/.556

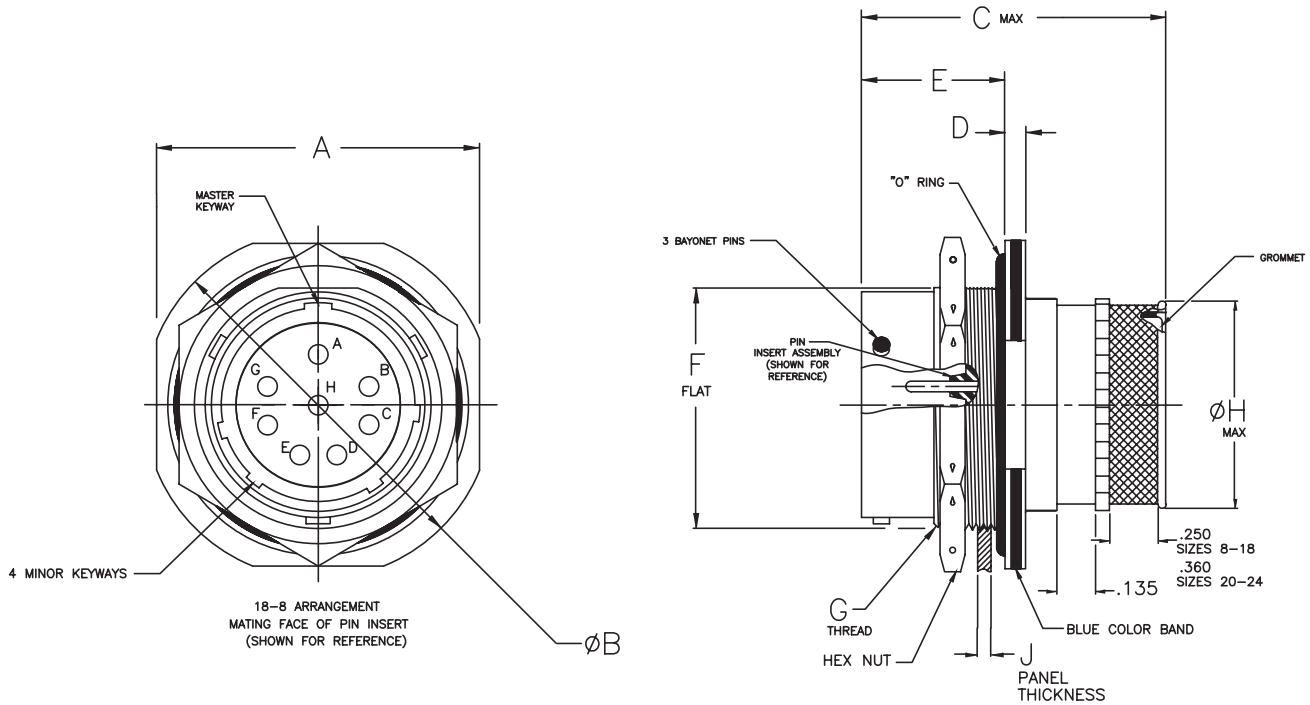




**MIL-DTL-26482 Series II**  
**Integrated Rear Banding Platform**  
**Jam Nut Receptacle (MS3474)**

**AE15-472 Receptacle Connector, Jam Nut, with integrated Rear Banding Platform**

INTEGRATED REAR

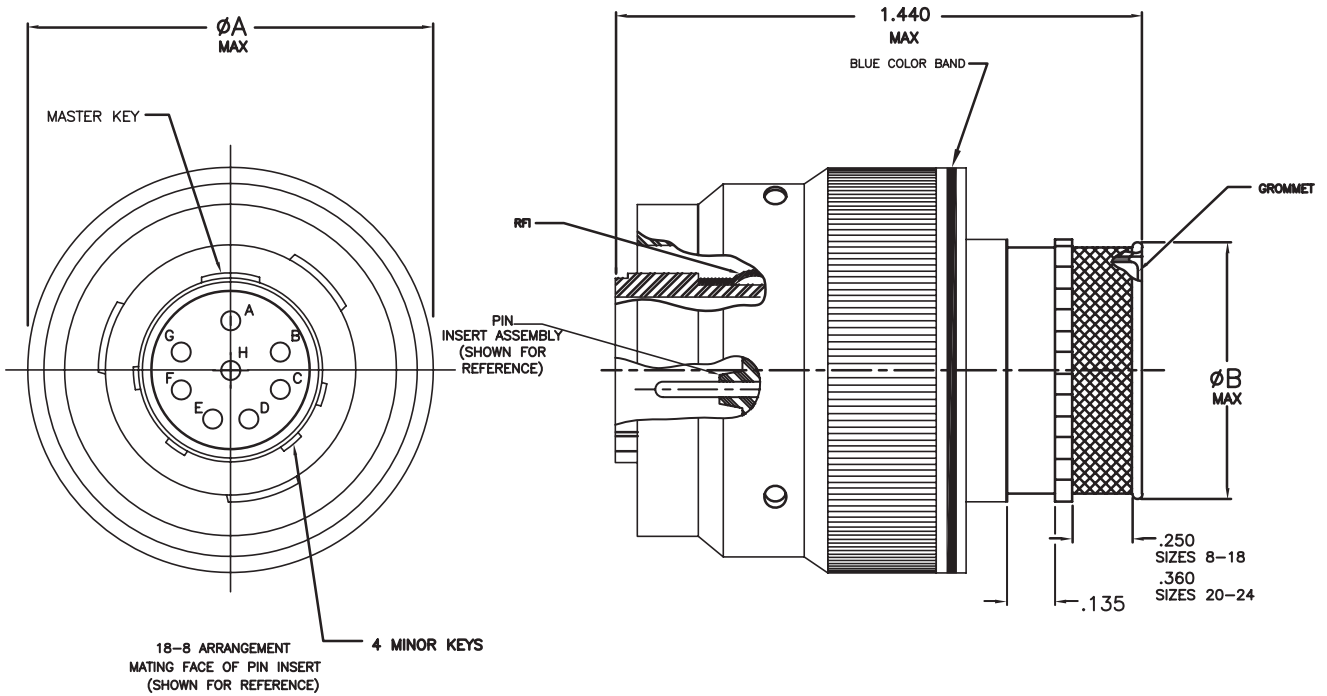


SHELL SIZE	A	$\phi B$	C MAX	D	E	F FLAT	G THREAD-2A	$\phi H$ MAX	J RECOMMENDED PANEL THICKNESS
8	.954/.923	1.078/1.047	1.410	.113/.086	.707/.658	.525	.562-24	.505	.187/.062
10	1.078/1.047	1.203/1.172	1.410	.113/.086	.707/.658	.650	.687-24	.632	.187/.062
12	1.266/1.235	1.391/1.360	1.410	.113/.086	.707/.658	.813	.875-40	.755	.187/.062
14	1.391/1.360	1.516/1.485	1.410	.113/.086	.707/.658	.937	1.000-20	.880	.187/.062
16	1.516/1.485	1.641/1.610	1.410	.113/.086	.707/.658	1.061	1.125-18	1.005	.187/.062
18	1.641/1.610	1.766/1.735	1.410	.113/.086	.707/.658	1.186	1.250-18	1.065	.187/.062
20	1.828/1.797	1.954/1.923	1.475	.148/.096	.772/.721	1.311	1.375-18	1.190	.250/.062
22	1.954/1.923	2.078/2.047	1.475	.148/.096	.772/.721	1.436	1.500-18	1.315	.250/.062
24	2.078/2.047	2.203/2.172	1.475	.148/.096	.772/.721	1.561	1.625-18	1.440	.250/.062

**MIL-DTL-26482 Series II**  
**Integrated Rear Banding Platform**  
**RFI Grounding Plug (MS3475)**



**AE15-473 Plug Connector, RFI, with integrated Rear Banding Platform**

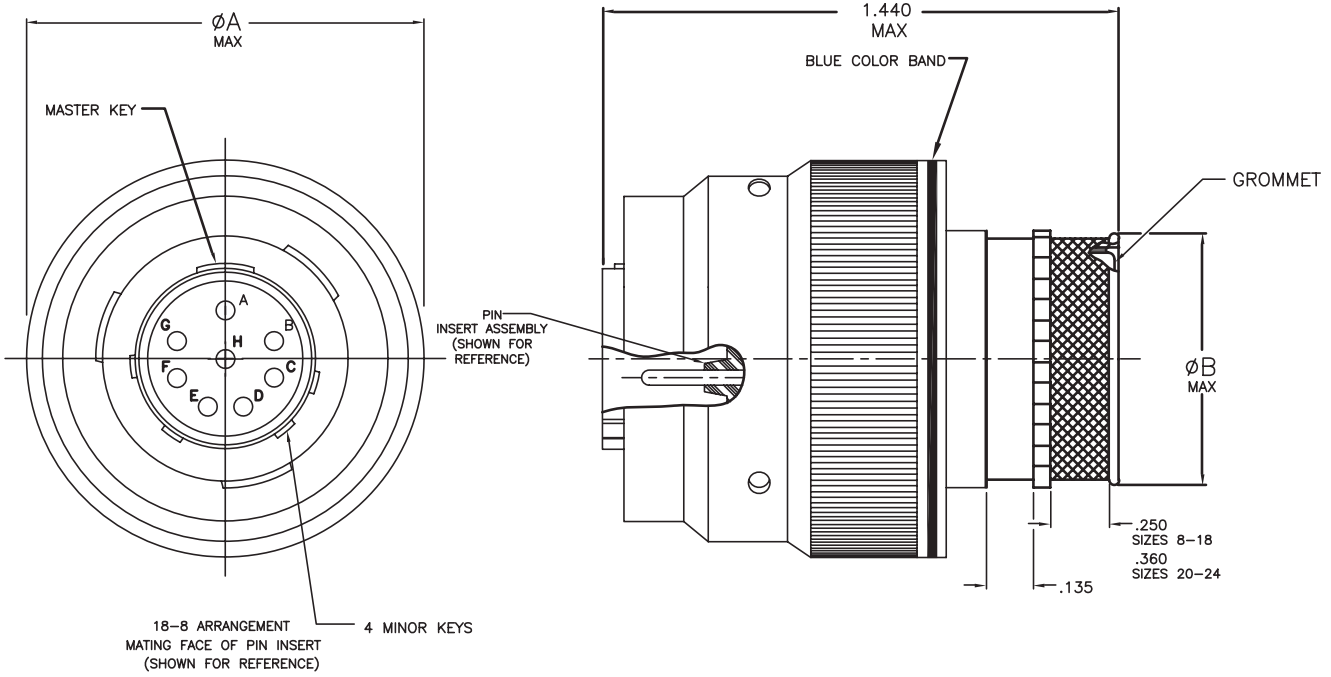


SHELL SIZE	$\phi A$ MAX	$\phi B$ MAX
8	.782	.505
10	.926	.632
12	1.043	.755
14	1.183	.880
16	1.305	1.005
18	1.391	1.065
20	1.631	1.190
22	1.656	1.315
24	1.777	1.440



**MIL-DTL-26482 Series II**  
**Integrated Rear Banding Platform**  
**Straight Plug (MS3476)**

**AE15-474 Plug Connector, Straight, with integrated Rear Banding Platform**



INTEGRATED REAR

SHELL SIZE	$\phi A$ MAX	$\phi B$ MAX
8	.782	.505
10	.926	.632
12	1.043	.755
14	1.183	.880
16	1.305	1.005
18	1.391	1.065
20	1.631	1.190
22	1.656	1.315
24	1.777	1.440

# MIL-DTL-38999 Series I Integrated Rear Banding Platform Part Number Development



## Part Number Configuration

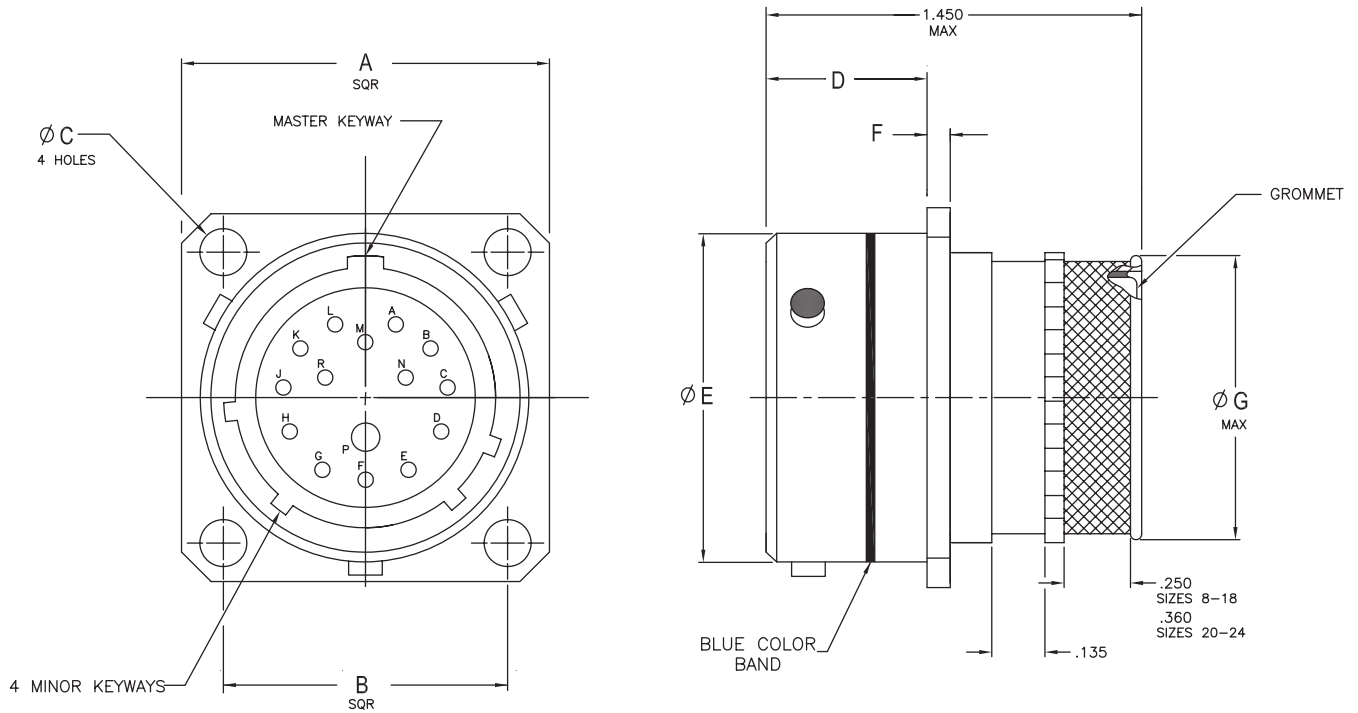
Aero Prefix	AE45-	475	T	15	B	15	P	A
<b>Shell Type</b>								
475 = Front, wall mount (Ref: MS27466)								
476 = Plug Connector, RFI (Ref: MS27467)								
477 = Jam Nut Connector (Ref: MS27468)								
478 = Rear, wall mount (Ref: MS27656)								
<b>Class</b>								
T for reference only								
<b>Shell Size</b>								
9, 11, 13, 15, 17, 19, 21, 23, 25								
<b>Material Finish</b>								
A = Aluminum, Bright Cadmium								
B = Aluminum, Cadmium/Olive Drab								
F = Aluminum, Electroless Nickel								
S = Stainless Steel, Passivated								
<b>Insert Arrangement</b>								
Per MIL-STD-1560								
<b>Contact Style</b>								
P = Pin								
S = Socket								
<b>Polarization (Keying)</b>								
Normal = Blank								
Alternative Polarization = A, B, C & D								

INTEGRATED REAR



**MIL-DTL-38999 Series I**  
**Integrated Rear Banding Platform**  
**AE45-475**

**AE45-475 Front Wall Mount Receptacle with integrated Rear Banding Platform**



**INTEGRATED REAR**

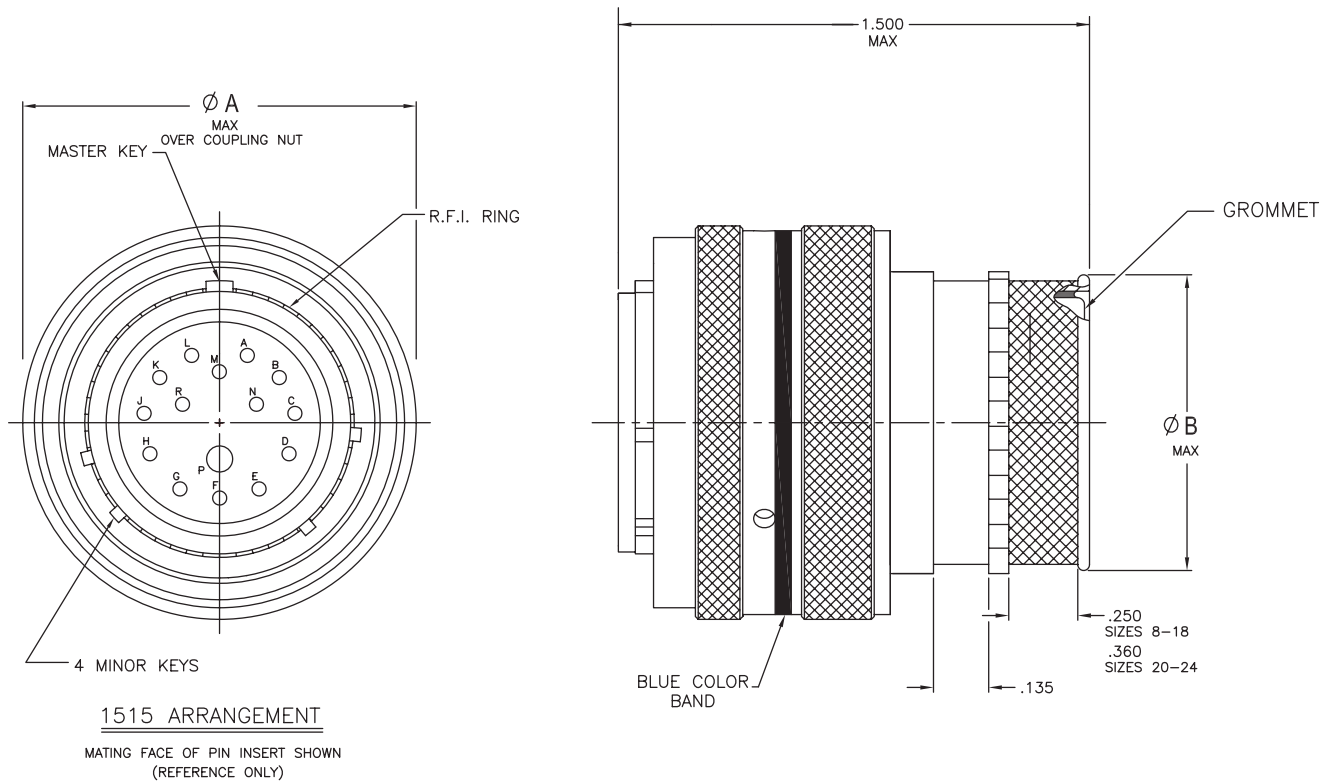
SHELL SIZE	A	B	$\phi C$	D	$\phi E$	F	$\phi G$ MAX
	$\pm .020$	BASIC	+0.010 -.005	+0.000 -.005	+0.001 -.005	+0.015 -.000	
9	.938	.719	.128	.820	.572	.085	.453
11	1.031	.812	.128	.820	.700	.085	.571
13	1.125	.906	.128	.820	.850	.085	.690
15	1.219	.969	.128	.820	.975	.085	.847
17	1.312	1.062	.128	.820	1.100	.085	.965
19	1.438	1.156	.128	.820	1.207	.085	1.083
21	1.562	1.250	.128	.790	1.332	.115	1.201
23	1.688	1.375	.147	.790	1.457	.115	1.319
25	1.812	1.500	.147	.790	1.582	.115	1.447

**MIL-DTL-38999 Series I**  
**Integrated Rear Banding Platform**  
**AE45-476**



**AE45-476 Plug Connector, RFI, with integrated Rear Banding Platform**

INTEGRATED REAR

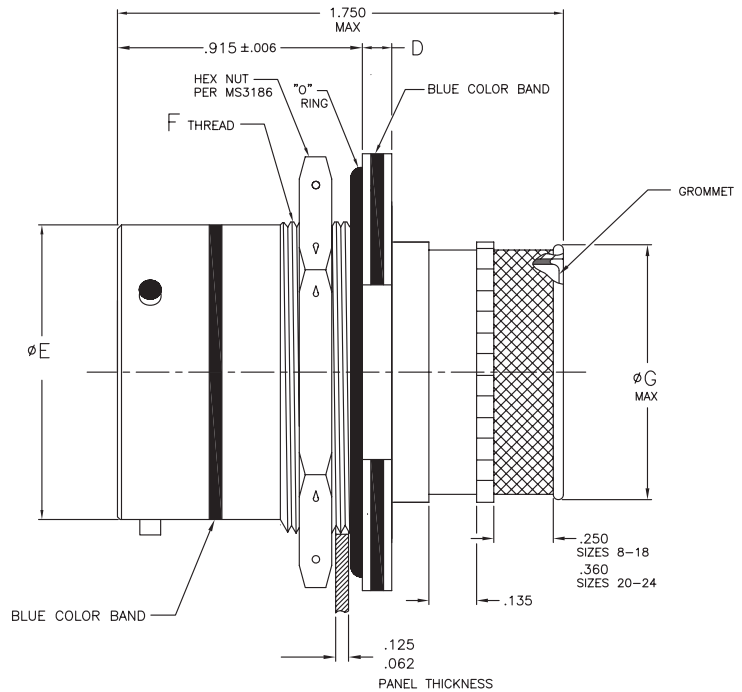
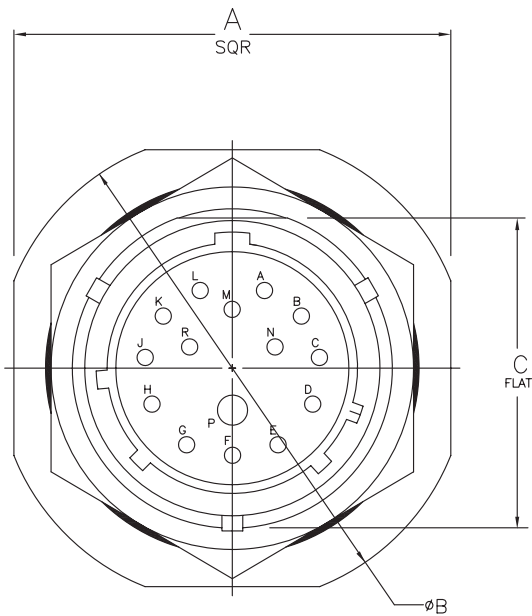


SHELL SIZE	$\varnothing A$ MAX	$\varnothing B$ MAX
9	.859	.453
11	.984	.571
13	1.156	.690
15	1.281	.847
17	1.406	.965
19	1.516	1.083
21	1.641	1.201
23	1.766	1.319
25	1.891	1.447



**MIL-DTL-38999 Series I**  
**Integrated Rear Banding Platform**  
**AE45-477**

**AE 45-477 Jam Nut Receptacle with integrated Rear Banding Platform**



INTEGRATED REAR

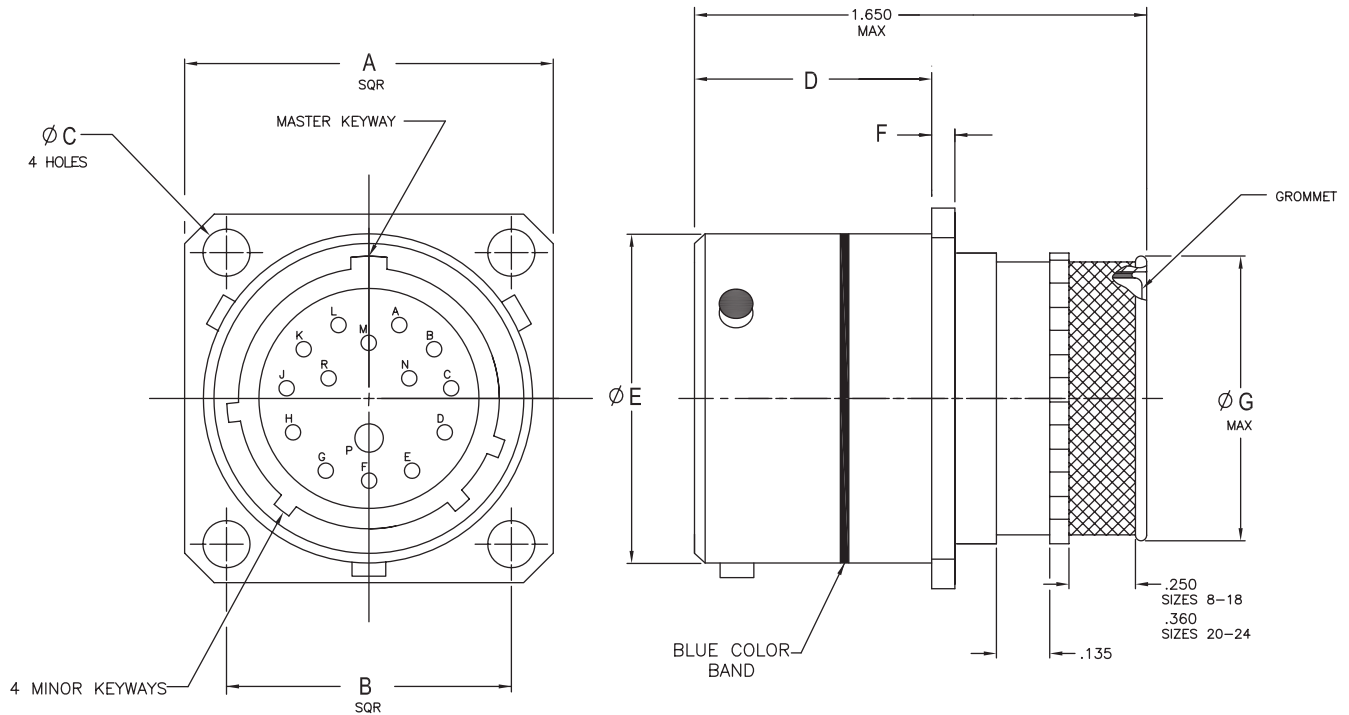
SHELL SIZE	A	ØB	C FLAT	D	ØE	F Thread-2A	ØG MAX
	±.016	±.016	+.001 -.010	+.011 -.010	+.001 -.005		
9	1.062	1.188	.655	.109	.572	.687-24	.453
11	1.250	1.375	.755	.109	.700	.812-20	.571
13	1.375	1.500	.942	.109	.850	1.000-20	.690
15	1.500	1.625	1.066	.109	.975	1.125-18	.847
17	1.625	1.750	1.191	.109	1.100	1.250-18	.965
19	1.812	1.938	1.316	.140	1.207	1.375-18	1.083
21	1.938	2.062	1.441	.140	1.332	1.500-18	1.201
23	2.062	2.188	1.566	.140	1.457	1.625-18	1.319
25	2.188	2.312	1.691	.140	1.582	1.750-18	1.447

**MIL-DTL-38999 Series I**  
**Integrated Rear Banding Platform**  
**AE45-478**



**AE45-478 Rear Wall Mount Receptacle with integrated Rear Banding Platform**

INTEGRATED REAR



SHELL SIZE	A	B	$\phi C$	D	$\phi E$	F	$\phi G$ MAX
	$\pm .020$	BASIC	+0.010 -.005	+0.000 -.005	+0.001 -.005	+0.015 -.000	
9	.938	.719	.128	.820	.572	.085	.453
11	1.031	.812	.128	.820	.700	.085	.571
13	1.125	.906	.128	.820	.850	.085	.690
15	1.219	.969	.128	.820	.975	.085	.847
17	1.312	1.062	.128	.820	1.100	.085	.965
19	1.438	1.156	.128	.820	1.207	.085	1.083
21	1.562	1.250	.128	.790	1.332	.115	1.201
23	1.688	1.375	.147	.790	1.457	.115	1.319
25	1.812	1.500	.147	.790	1.582	.115	1.447





**MIL-DTL-38999 Series III  
Integrated Rear Banding Platform  
Part Number Development**

**Part Number Configuration**

<b>Aero Prefix</b>	<b>AE65-</b>	<b>379</b>	<b>W</b>	<b>B</b>	<b>98</b>	<b>S</b>	<b>N</b>
<b>Shell Type</b>							
377 = Rear, Narrow Flange (Ref: D38999/20)							
378 = Rear, Jam Nut receptacle (Ref: D38999/24)							
379 = Plug Connector, RFI (Ref: D38999/26)							
<b>Material Finish</b>							
W = Aluminum, Olive Drab Cadmium over Nickel							
F = Aluminum, Electroless Nickel							
G = Stainless Steel, Passivated, Non-Firewall							
K = Stainless Steel, Passivated, Firewall							
BN = Aluminum, Black Nickel (RoHS)							
<b>Shell Size</b>							
A = 9, B = 11, C = 13, D = 15, E = 17, F = 19, G = 21, H = 23, J = 25							
<b>Insert Arrangement</b>							
Per MIL-STD-1560							
<b>Contact Style</b>							
P = Pin							
S = Socket							
A = Pin (Connectors used with other than Standard Contacts)							
B = Socket							
<b>Polarization (Keying)</b>							
N = Normal							
A, B, C, D and E							
<b>Note</b> = All minor keys are rotated to provide shell polarization, the master key remains fixed.							

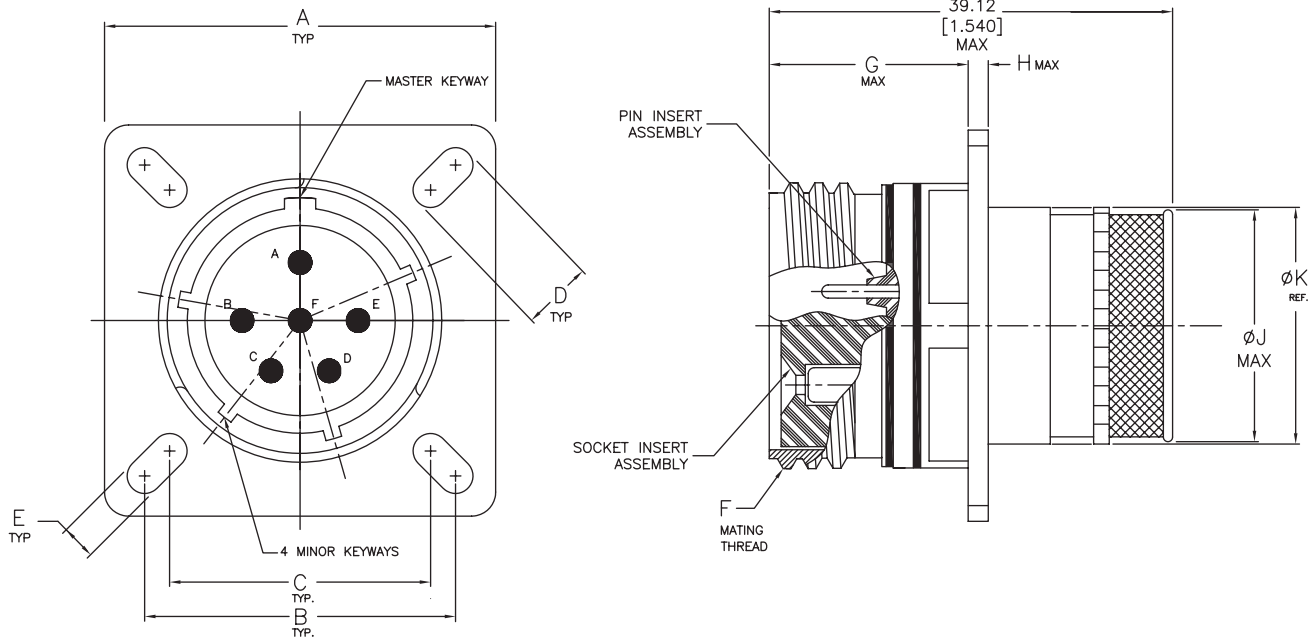
INTEGRATED REAR

**MIL-DTL-38999 Series III**  
**Integrated Rear Banding Platform**  
**AE65-377**



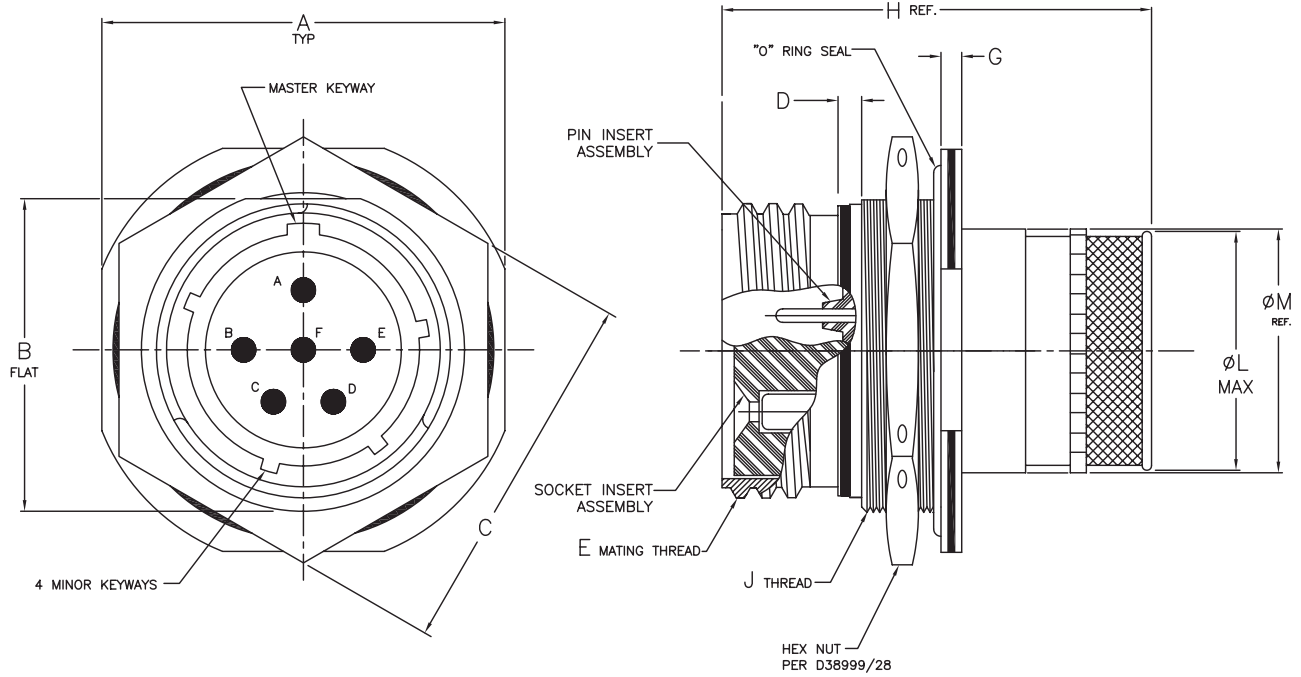
**AE65-377 Wall Mount Receptacle with integrated Rear Banding Platform**

INTEGRATED REAR



SHELL SIZE	SHELL CODE	A TYP		B TYP		C TYP		D TYP		E		F THREAD TRIPLE START	G MAX		H MAX		ØJ MAX		ØK REF.
		INCH ±.012	MM ±0.26	INCH ±.010	MM ±0.26	INCH ±.010	MM ±0.26	INCH ±.008	MM ±0.20	INCH ±.008	MM ±0.20		INCH	MM	INCH	MM	INCH	MM	
9	A	.937	23.80	.719	18.26	.594	15.09	.216	5.49	.128	3.25	.6250-1P-.3L	.820	20.83	.099	2.50	.453	11.50	.476
11	B	1.031	26.20	.812	20.62	.719	18.26	.194	4.93	.128	3.25	.7500-1P-.3L	.820	20.83	.099	2.50	.571	14.50	.594
13	C	1.126	28.60	.906	23.01	.812	20.62	.194	4.93	.128	3.25	.8750-1P-.3L	.820	20.83	.099	2.50	.690	17.53	.713
15	D	1.220	31.00	.969	24.61	.906	23.01	.194	4.93	.128	3.25	1.000-1P-.3L	.820	20.83	.099	2.50	.847	21.51	.870
17	E	1.311	33.30	1.062	26.97	.969	24.61	.194	4.93	.128	3.25	1.187-1P-.3L	.820	20.83	.099	2.50	.965	24.51	.988
19	F	1.437	36.50	1.156	29.36	1.062	26.97	.194	4.93	.128	3.25	1.250-1P-.3L	.820	20.83	.099	2.50	1.083	27.51	1.104
21	G	1.563	39.70	1.250	31.75	1.156	29.36	.194	4.93	.128	3.25	1.375-1P-.3L	.790	20.07	.126	3.20	1.201	30.51	1.226
23	H	1.689	42.90	1.375	34.93	1.250	31.75	.242	6.15	.154	3.91	1.500-1P-.3L	.790	20.07	.126	3.20	1.319	33.50	1.342
25	J	1.811	46.00	1.500	38.10	1.375	34.93	.242	6.15	.154	3.91	1.625-1P-.3L	.790	20.07	.126	3.20	1.447	36.75	1.460

**AE65-378 Jam Nut Receptacle with integrated Rear Banding Platform**



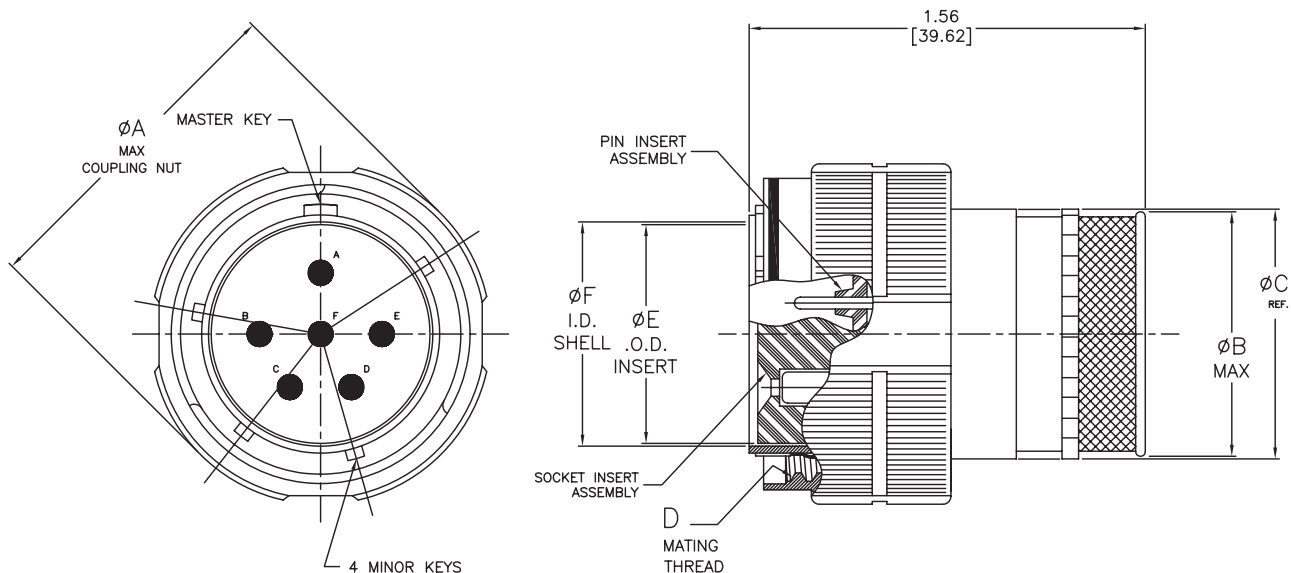
INTEGRATED REAR

SHELL SIZE	SHELL CODE	A	B MTG. FLAT	C HEX	D	E THREADE TRIPLE START	G	H REF.	J THREAD	ØL MAX	ØM REF.
		±.016	+0.04 -0.06								
9	A	1.063	.651	.945 .859	.555	.6250-1P-.3L	.087	1.580	M17x1.0-6g.100R	.453	.476
11	B	1.252	.751	1.063 .984	.555	.7500-1P-.3L	.087	1.580	M20x1.0-6g.100R	.571	.594
13	C	1.374	.983	1.260 1.172	.563	.8750-1P-.3L	.087	1.580	M25x1.0-6g.100R	.690	.713
15	D	1.500	1.062	1.417 1.296	.563	1.000-1P-.3L	.087	1.580	M28x1.0-6g.100R	.847	.870
17	E	1.626	1.187	1.457 1.422	.563	1.187-1P-.3L	.087	1.580	M32x1.0-6g.100R	.965	.988
19	F	1.811	1.312	1.614 1.546	.563	1.250-1P-.3L	.087	1.615	M35x1.0-6g.100R	1.083	1.104
21	G	1.937	1.437	1.811 1.672	.563	1.375-1P-.3L	.118	1.615	M38x1.0-6g.100R	1.201	1.226
23	H	2.063	1.562	1.969 1.796	.563	1.500-1P-.3L	.118	1.615	M41x1.0-6g.100R	1.319	1.342
25	J	2.189	1.687	2.017 1.939	.563	1.625-1P-.3L	.118	1.615	M44x1.0-6g.100R	1.447	1.460

**MIL-DTL-38999 Series III**  
**Integrated Rear Banding Platform**  
**AE65-379**



**AE65-379 Plug Connector, RFI, with integrated Rear Banding Platform**



INTEGRATED REAR

SHELL SIZE	MS SHELL CODE	ØA MAX		ØB MAX		ØC REF.	D THREAD TRIPLE START	ØE		ØF	
		INCH	MM	INCH	MM			INCH +0.05 -0.09	MM +0.13 -0.25	INCH +0.05 -0.01	MM +0.13 -0.03
9	A	.858	21.8	.453	11.50	.476	.625-1P-3L	.285	7.24	.387	9.83
11	B	.984	25.0	.571	14.50	.594	.750-1P-3L	.412	10.49	.514	13.06
13	C	1.157	29.4	.690	17.53	.713	.875-1P-3L	.527	13.39	.628	15.95
15	D	1.279	32.5	.847	21.51	.870	1.000-1P-3L	.651	16.56	.753	19.13
17	E	1.405	35.7	.965	24.51	.988	1.187-1P-3L	.777	19.74	.878	22.30
19	F	1.515	38.5	1.083	27.51	1.104	1.250-1P-3L	.866	22.00	.972	24.69
21	G	1.641	41.7	1.201	30.51	1.226	1.375-1P-3L	.990	25.17	1.097	27.86
23	H	1.767	44.9	1.319	33.50	1.342	1.500-1P-3L	1.116	28.35	1.222	31.04
25	J	1.889	48.0	1.447	36.75	1.460	1.625-1P-3L	1.240	31.52	1.347	34.21